

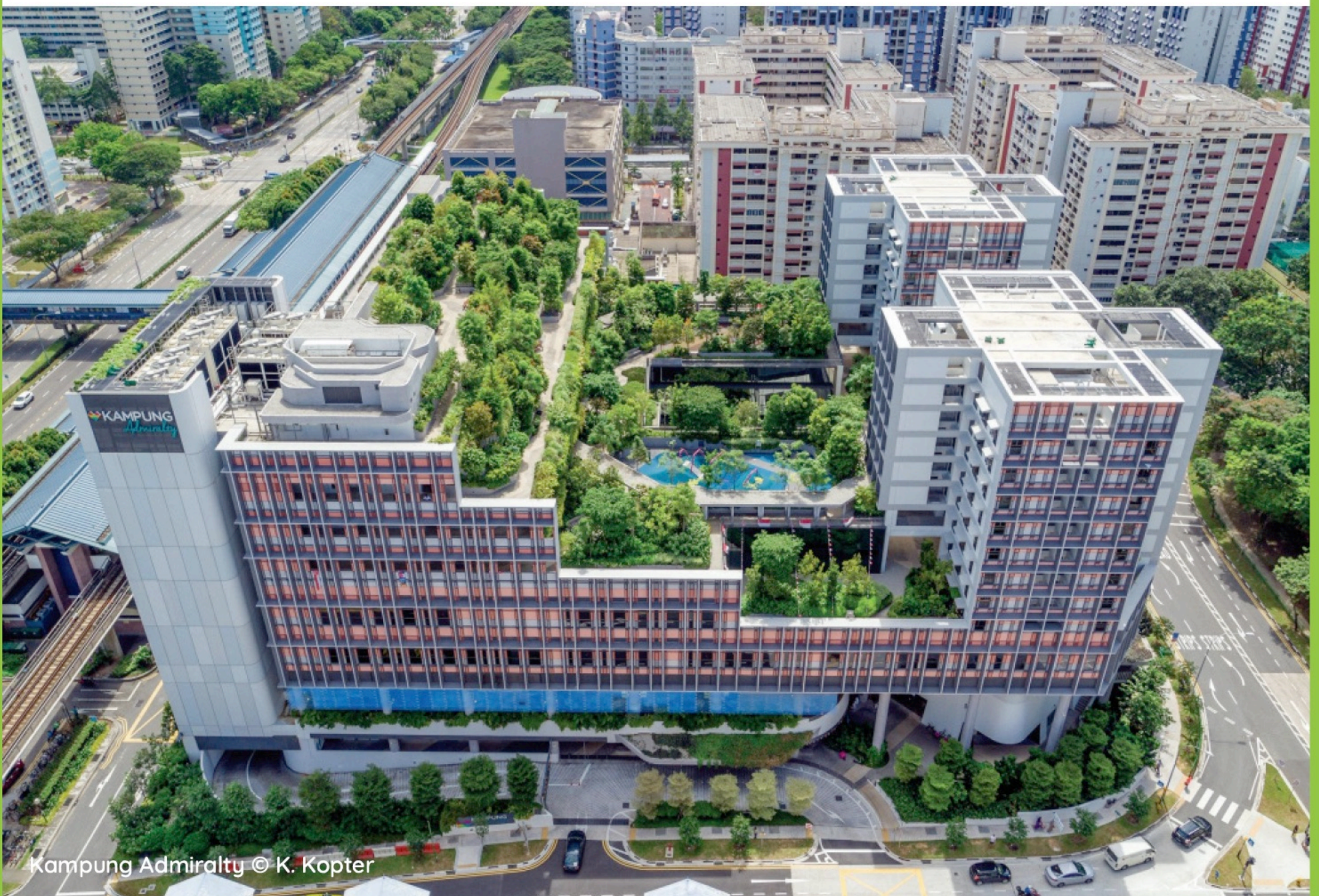
# DRAFT MASTER PLAN 2019

## WHAT TO LOOK OUT FOR IN WOODLANDS!

Woodlands is set to soon transform into the largest economic hub in the North region. Which means that residents of the region can look forward to new job opportunities, new amenities and enhanced connectivity within and beyond their homes. For more information on the Draft Master Plan 2019, please visit [ura.sg/DMP19](http://ura.sg/DMP19).

## HOW OUR TOWNS ARE PLANNED

Our towns are planned to be liveable and self-sufficient, with easily accessible shops, health care, schools, community facilities and parks. Commercial nodes, industrial estates and business parks within or nearby the town, also help to provide nearer job opportunities for residents. The detailed planning and implementation of plans for each town is a joint effort of many government agencies.





### ADMIRALTY PARK

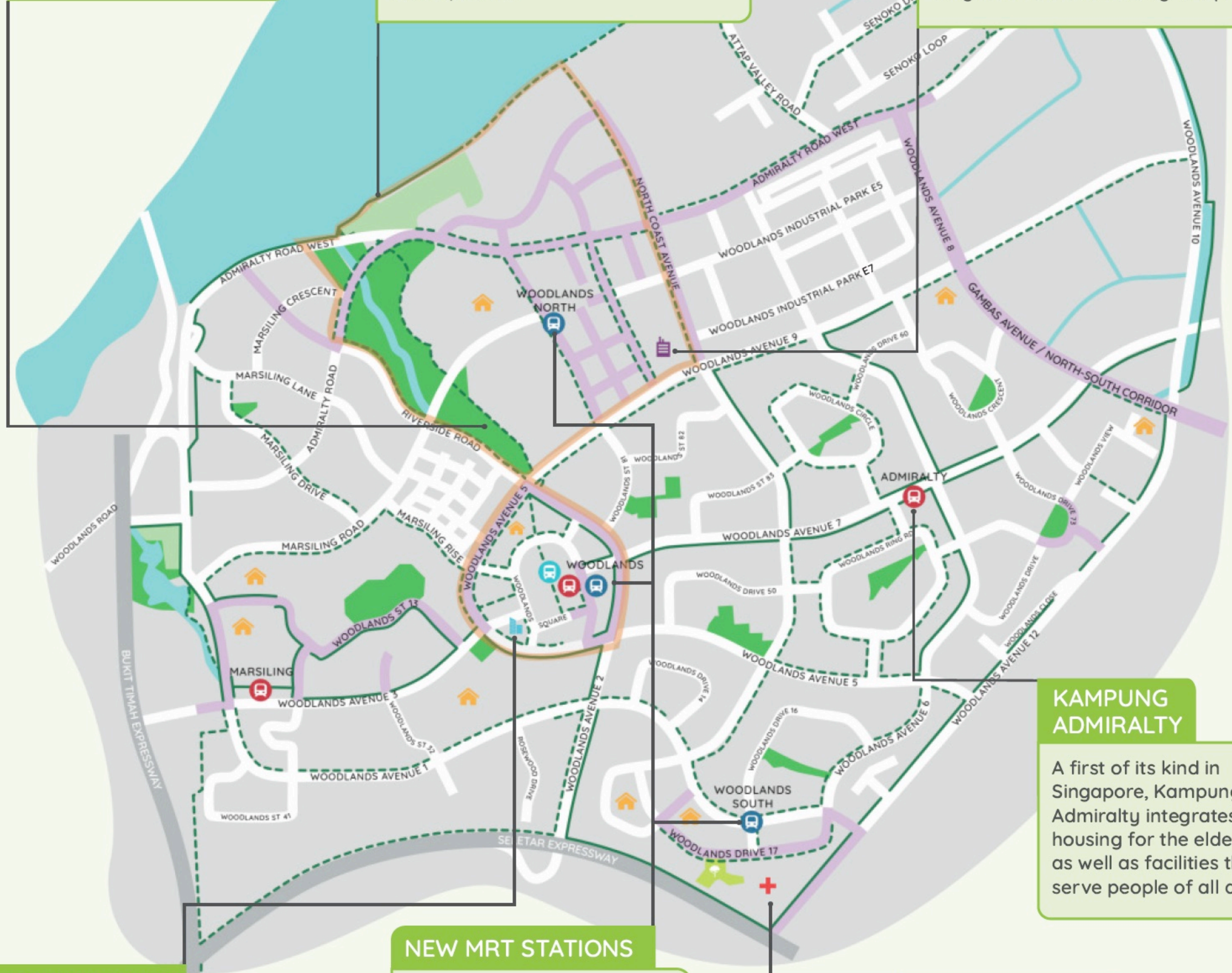
Families can enjoy outdoor activities at the largest park in the north, which features 26 slides.

### WOODLANDS REGIONAL CENTRE

In the coming years, Woodlands Regional Centre will transform into the North's new lifestyle and employment hub, with new industrial, commercial and residential developments.

### WOODLANDS NORTH COAST BUILDING 1

The pilot JTC development, the first of its kind in Singapore, will offer options for the flexible use of industrial space for general manufacturing companies.



### KAMPUNG ADMIRALTY

A first of its kind in Singapore, Kampung Admiralty integrates housing for the elderly, as well as facilities that serve people of all ages.

### WOODS SQUARE

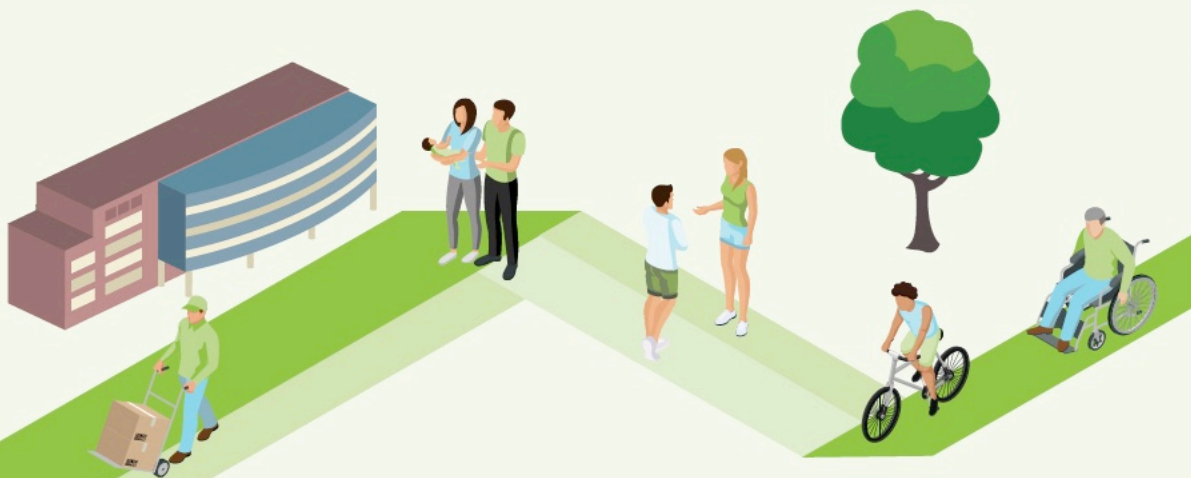
Look forward to more jobs closer to home with the completion of the commercial development in 2021.

### NEW MRT STATIONS

Three new MRT stations on the Thomson-East Coast Line will be operational by end-2019, and will offer much shorter commute times to the city.

### WOODLANDS HEALTH CAMPUS

From 2022 onwards, the campus will offer convenient quality healthcare services to residents.



### LEGEND

#### EXISTING DEVELOPMENTS

- Park
- Interim Park
- M MRT
- BI Bus Interchange
- Waterbody
- Park Connector/ Cycling Route

#### NEW DEVELOPMENTS

- Residential
- Industrial
- Park
- MRT
- Road Improvement (Upcoming/ Under Study)
- Commercial
- + Healthcare Facility
- WR Woodlands Regional Centre
- Park Connector/ Cycling Route