

Schematic Diagram

2 Champions Way, Singapore 738977

		Block 2							
Flr	Unit	1	2	3	4	5	6	7	8
11	B2S	D2PS	C2	AIS	BI	DIS	D2PS	B2S	
10	B2S	D2PS	C2	AIS	BI	DIS	D2PS	B2S	
9	B2S	D2PS	C2	AIS	BI	DIS	D2PS	B2S	
8	B2S	D2PS	C2	AIS	BI	DIS	D2PS	B2S	
7	B2S	D2PS	C2	AIS	BI	DIS	D2PS	B2S	
6	B2S	D2PS	C2	AIS	BI	DIS	D2PS	B2S	
5	B2S	D2PS	C2	AIS	BI	DIS	D2PS	B2S	
4	B2S	D2PS	C2	AIS	BI	DIS	D2PS	B2S	
3	B2S	D2PS	C2	AIS	BI	DIS	D2PS	B2S	
2	B2S	D2PS	C2	AIS	BI	DIS	D2PS	B2S	
1	B2S (P)		C2 (P)	AIS (P)	BI (P)	DIS (P)	D2PS (P)	B2S (P)	

6 Champions Way, Singapore 738975

		Block 6							
Flr	Unit	9	10	11	12	13	14	15	16
11	B2S	D2PS	DIS	BI	AIS	BIS	D3PS	C3S	
10	B2S	D2PS	DIS	BI	AIS	BIS	D3PS	C3S	
9	B2S	D2PS	DIS	BI	AIS	BIS	D3PS	C3S	
8	B2S	D2PS	DIS	BI	AIS	BIS	D3PS	C3S	
7	B2S	D2PS	DIS	BI	AIS	BIS	D3PS	C3S	
6	B2S	D2PS	DIS	BI	AIS	BIS	D3PS	C3S	
5	B2S	D2PS	DIS	BI	AIS	BIS	D3PS	C3S	
4	B2S	D2PS	DIS	BI	AIS	BIS	D3PS	C3S	
3	B2S	D2PS	DIS	BI	AIS	BIS	D3PS	C3S	
2	B2S	D2PS	DIS	BI	AIS	BIS	D3PS	C3S	
1	B2S (P)	D2PS (P)	DIS (P)	BI (P)		BIS (P)	D3PS (P)	C3S (P)	

8 Champions Way, Singapore 738974

		Block 8							
Flr	Unit	17	18	19	20	21	22	23	24
11	BI	C1	D2PS	B2S	C3S	D3PS	C5PS	BI	
10	BI	C1	D2PS	B2S	C3S	D3PS	C5PS	BI	
9	BI	C1	D2PS	B2S	C3S	D3PS	C5PS	BI	
8	BI	C1	D2PS	B2S	C3S	D3PS	C5PS	BI	
7	BI	C1	D2PS	B2S	C3S	D3PS	C5PS	BI	
6	BI	C1	D2PS	B2S	C3S	D3PS	C5PS	BI	
5	BI	C1	D2PS	B2S	C3S	D3PS	C5PS	BI	
4	BI	C1	D2PS	B2S	C3S	D3PS	C5PS	BI	
3	BI	C1	D2PS	B2S	C3S	D3PS	C5PS	BI	
2	BI	C1	D2PS	B2S	C3S	D3PS	C5PS	BI	
1	BI (P)	C1 (P)	D2PS (P)		C3S (P)	D3PS (P)	C5PS (P)	BI (P)	

10 Champions Way, Singapore 738953

		Block 10							
Flr	Unit	25	26	27	28	29	30	31	32
11	BI	C4PS	C5PS	AIS	BI	D2PS	C1	BI	
10	BI	C4PS	C5PS	AIS	BI	D2PS	C1	BI	
9	BI	C4PS	C5PS	AIS	BI	D2PS	C1	BI	
8	BI	C4PS	C5PS	AIS	BI	D2PS	C1	BI	
7	BI	C4PS	C5PS	AIS	BI	D2PS	C1	BI	
6	BI	C4PS	C5PS	AIS	BI	D2PS	C1	BI	
5	BI	C4PS	C5PS	AIS	BI	D2PS	C1	BI	
4	BI	C4PS	C5PS	AIS	BI	D2PS	C1	BI	
3	BI	C4PS	C5PS	AIS	BI	D2PS	C1	BI	
2	BI	C4PS	C5PS	AIS	BI	D2PS	C1	BI	
1	BI (P)	C4PS (P)	C5PS (P)		BI (P)	D2PS (P)	C1 (P)	BI (P)	

- 1-Bedroom + Study
- 2-Bedroom
- 2-Bedroom + Ensuite Study
- 2-Bedroom + Study
- 3-Bedroom Deluxe
- 3-Bedroom + Study
- 3-Bedroom Premium + Study
- 4-Bedroom Deluxe + Study
- 4-Bedroom Premium + Study

Find your true joy every day,
in every way



but your true sanctuary

Discover not just a new home

1-Bedroom + Study

Type A1S

46 sq m / 495 sq ft

BLK 2 : #02-04 to #11-04
 BLK 6 : #02-13* to #11-13*
 BLK 10 : #02-28 to #11-28
 :

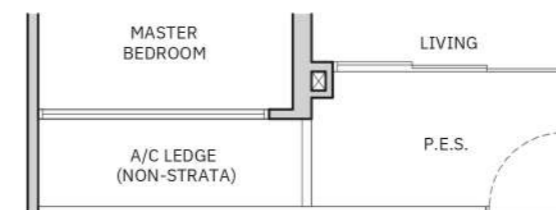
Type A1S (P)

46 sq m / 495 sq ft

BLK 2 : #01-04



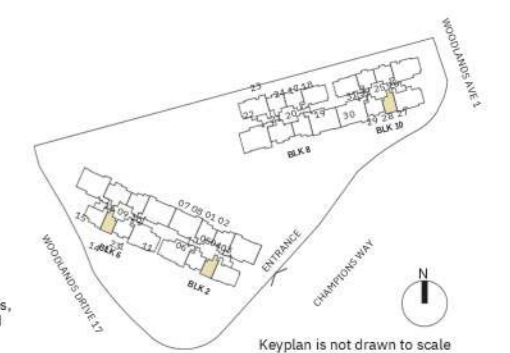
Type A1S (P)



Wall not allowed to be hacked or altered
 TB Tall Boy
 * Mirror Image
 P.E.S. - Private Enclosed Space
 WC - Water Closet
 WD - Washer Cum Dryer
 HS - Household Shelter
 DB/ST - Distribution Board/Storage
 RC - Reinforced Concrete
 F - Fridge
 A/C - Air-Conditioner



Area includes balcony and private enclosed space (PES) where applicable and excludes among others, the RC - Reinforced Concrete Ledge and A/C - Air Conditioner Ledge. The plans are subject to change as may be required by relevant authorities. All floor plans and areas are subject to final survey. The balcony shall not be enclosed unless with the approved balcony screen, more particularly illustrated under the header "Approved Balcony Screen". Please refer to the letter containing the Particulars, Documents and Information relating to the development and the unit, for the floor plan relating to the unit you intend to purchase. The Sale and Purchase Agreement contains the entire agreement between the developer and the purchaser and supersedes and cancels in all respects all previous representations, warranties, promises, inducements or statements of intention, whether written or oral made by the developer and/or the developer's agent which are not embodied in the Sale and Purchase Agreement.

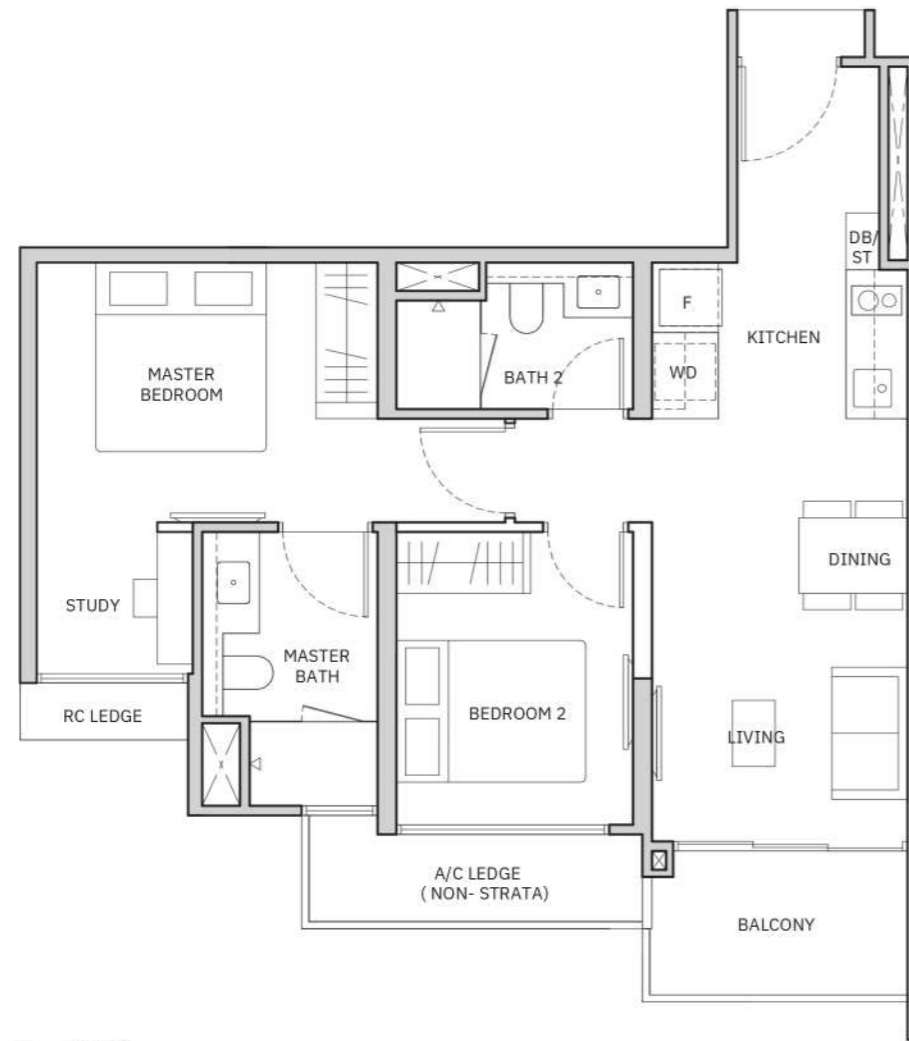


2-Bedroom + Ensuite Study

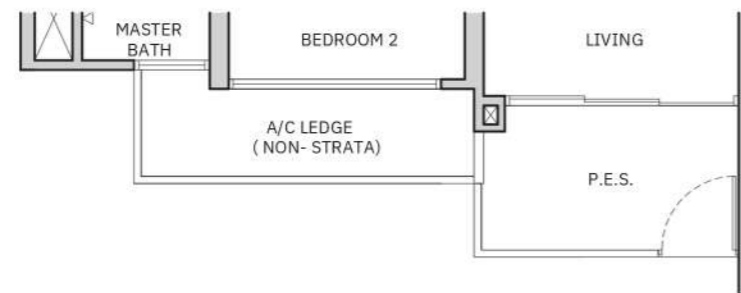
Type B1S

62 sq m / 667 sq ft

BLK 6 : #02-14 to #11-14



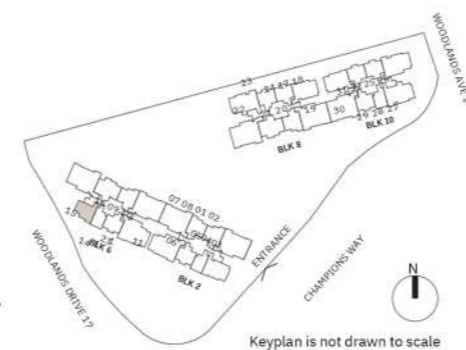
Type B1S (P)



Wall not allowed to be hacked or altered
 R.E.S. - Private Enclosed Space
 WC - Water Closet
 DB/ST - Distribution Board/Storage
 F - Fridge
 WD - Washer Cum Dryer
 HS - Household Shelter
 RC - Reinforced Concrete
 A/C - Air-Conditioner
 TB Tall Boy
 * Mirror Image



Area includes balcony and private enclosed space (PES) where applicable and excludes among others, the RC - Reinforced Concrete Ledge and A/C - Air Conditioner Ledge. The plans are subject to change as may be required by relevant authorities. All floor plans and areas are subject to final survey. The balcony shall not be enclosed unless with the approved balcony screen, more particularly illustrated under the header "Approved Balcony Screen". Please refer to the letter containing the Particulars, Documents and Information relating to the development and the unit, for the floor plan relating to the unit you intend to purchase. The Sale and Purchase Agreement contains the entire agreement between the developer and the purchaser and supersedes and cancels in all respects all previous representations, warranties, promises, inducements or statements of intention, whether written or oral made by the developer and/or the developer's agent which are not embodied in the Sale and Purchase Agreement.



Keyplan is not drawn to scale

2-Bedroom + Study

Type B2S (P)

66 sq m / 710 sq ft

BLK 2 : #01-01*, #01-08
BLK 6 : #01-09*

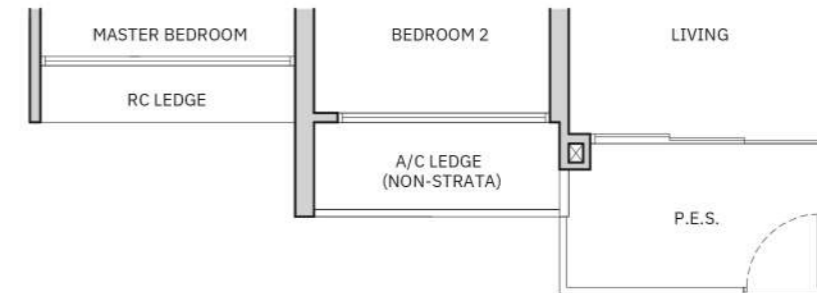
Type B2S

66 sq m / 710 sq ft

BLK 2 : #02-01* to #11-01*, #02-08 to #11-08
BLK 6 : #02-09* to #11-09*
BLK 8 : #02-20 to #11-20



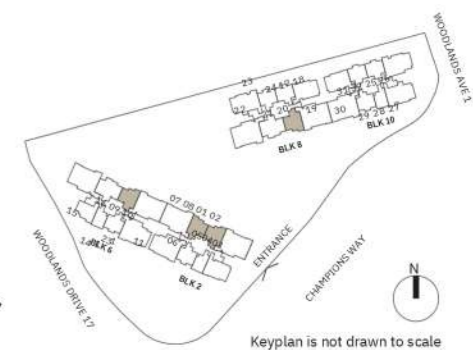
Type B2S (P)



Wall not allowed to be hacked or altered
 R.E.S. - Private Enclosed Space
 WC - Water Closet
 DB/ST - Distribution Board/Storage
 F - Fridge
 WD - Washer Cum Dryer
 HS - Household Shelter
 RC - Reinforced Concrete
 A/C - Air-Conditioner
 TB Tall Boy
 * Mirror Image



Area includes balcony and private enclosed space (PES) where applicable and excludes among others, the RC - Reinforced Concrete Ledge and A/C - Air Conditioner Ledge. The plans are subject to change as may be required by relevant authorities. All floor plans and areas are subject to final survey. The balcony shall not be enclosed unless with the approved balcony screen, more particularly illustrated under the header "Approved Balcony Screen". Please refer to the letter containing the Particulars, Documents and Information relating to the development and the unit, for the floor plan relating to the unit you intend to purchase. The Sale and Purchase Agreement contains the entire agreement between the developer and the purchaser and supersedes and cancels in all respects all previous representations, warranties, promises, inducements or statements of intention, whether written or oral made by the developer and/or the developer's agent which are not embodied in the Sale and Purchase Agreement.



Keyplan is not drawn to scale

3-Bedroom Deluxe

Type C1

81 sq m / 872 sq ft

BLK 8 : #02-18 to #11-18
BLK 10 #02-31* to #11-31*

Type C1 (P)

81 sq m / 872 sq ft

BLK 8 : #01-18
BLK 10 #01-31*

3-Bedroom Deluxe

Type C2

82 sq m / 883 sq ft

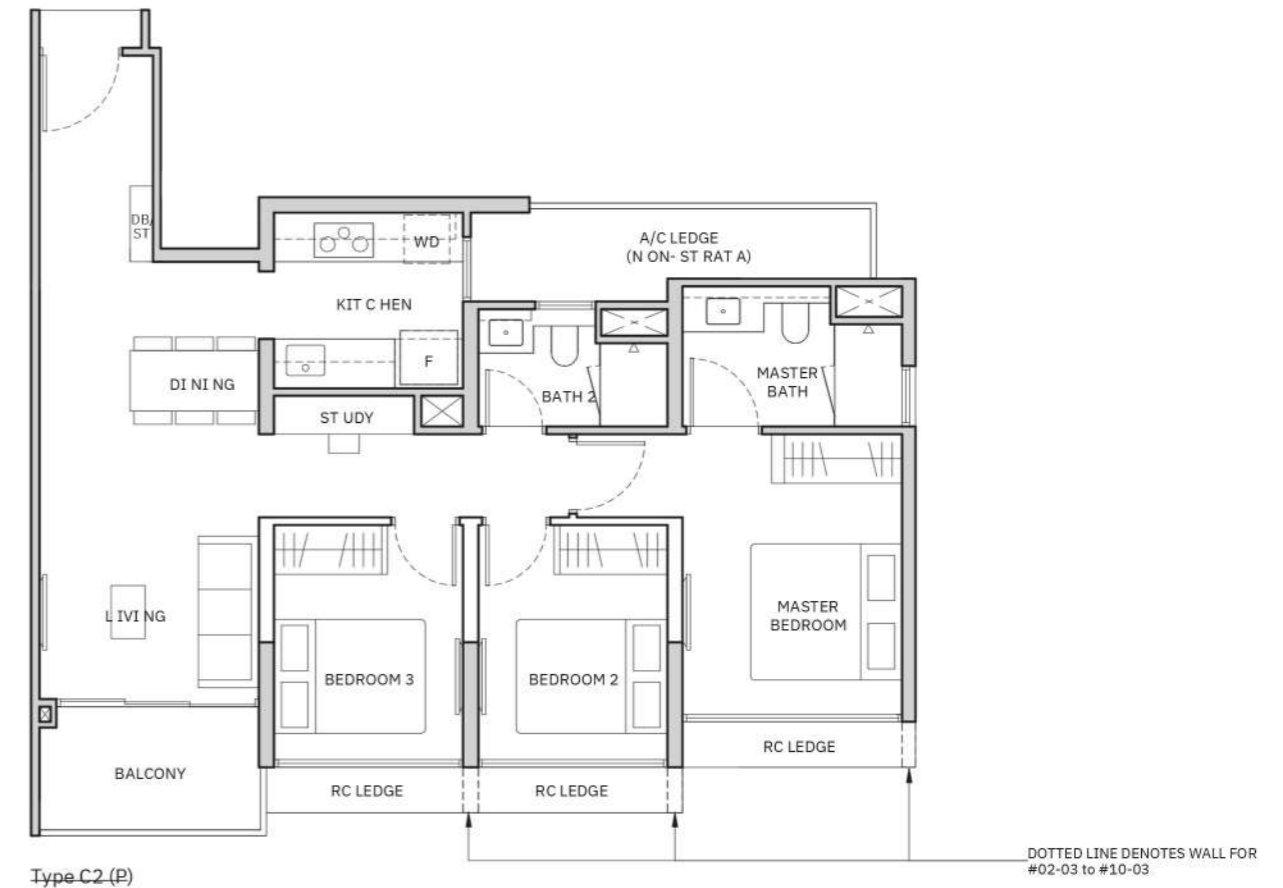
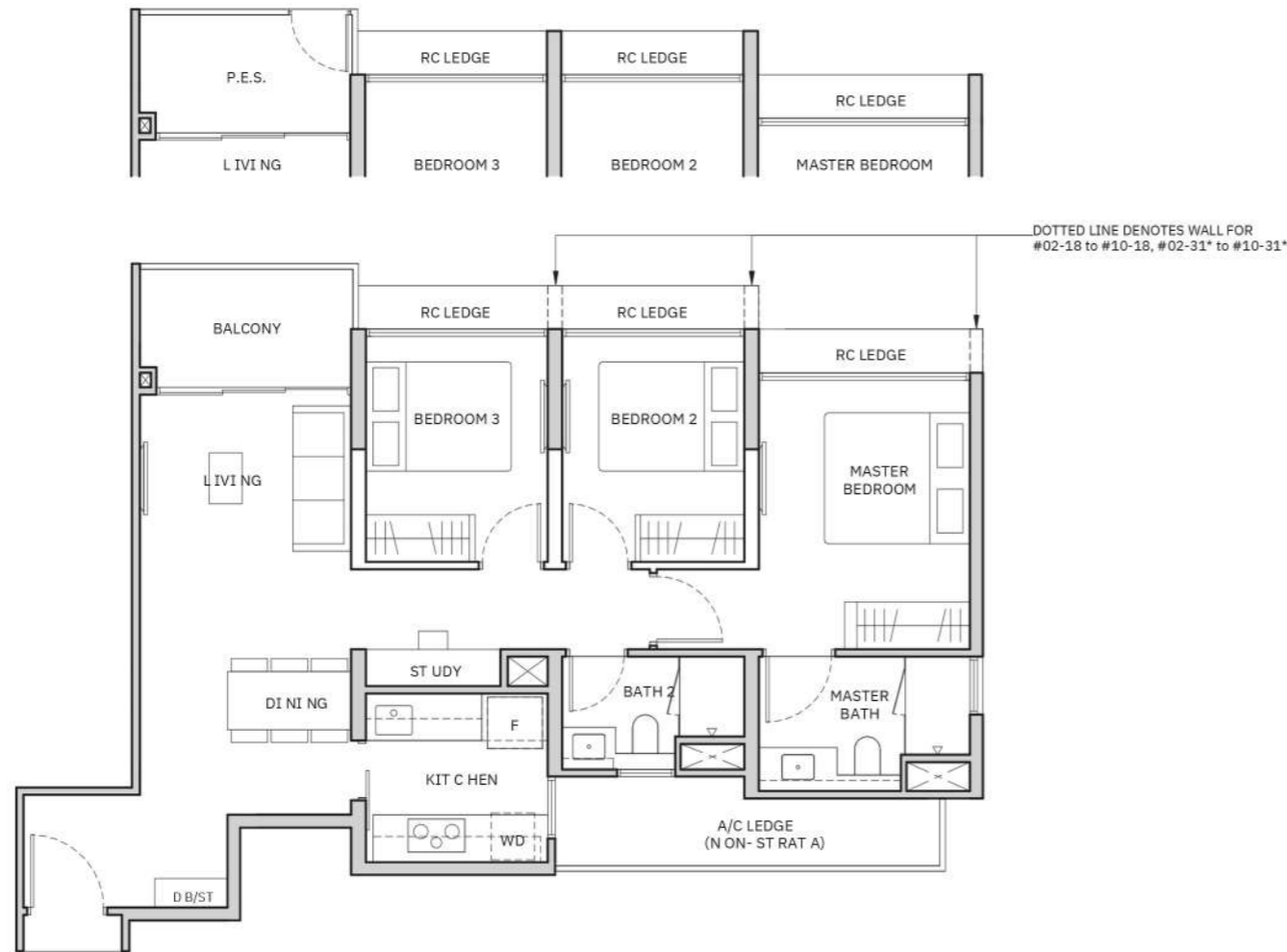
BLK 2 : #02-03 to #11-03

Type C2 (P)

82 sq m / 883 sq ft

BLK 2 : #01-03

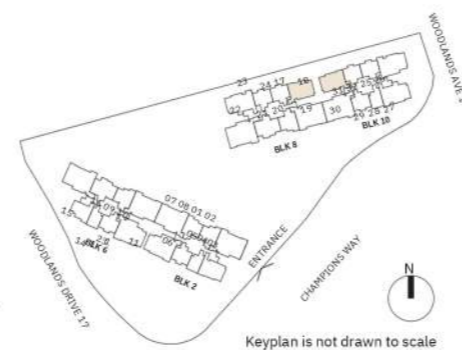
Type C1 (P)



Wall not allowed to be hacked or altered
P.E.S. - Private Enclosed Space
WC - Water Closet
DB/ST - Distribution Board/Storage
F - Fridge
WD - Washer Cum Dryer
HS - Household Shelter
RC - Reinforced Concrete
A/C - Air-Conditioner
TB Tall Boy
* Mirror Image



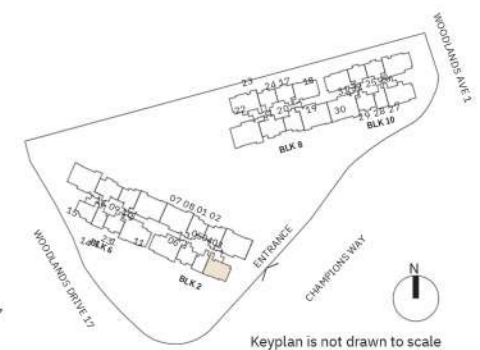
Area includes balcony and private enclosed space (PES) where applicable and excludes among others, the RC - Reinforced Concrete Ledge and A/C - Air Conditioner Ledge. The plans are subject to change as may be required by relevant authorities. All floor plans and areas are subject to final survey. The balcony shall not be enclosed unless with the approved balcony screen, more particularly illustrated under the header "Approved Balcony Screen". Please refer to the letter containing the Particulars, Documents and Information relating to the development and the unit, for the floor plan relating to the unit you intend to purchase. The Sale and Purchase Agreement contains the entire agreement between the developer and the purchaser and supersedes and cancels in all respects all previous representations, warranties, promises, inducements or statements of intention, whether written or oral made by the developer and/or the developer's agent which are not embodied in the Sale and Purchase Agreement.



Wall not allowed to be hacked or altered
P.E.S. - Private Enclosed Space
WC - Water Closet
DB/ST - Distribution Board/Storage
F - Fridge
WD - Washer Cum Dryer
HS - Household Shelter
RC - Reinforced Concrete
A/C - Air-Conditioner
TB Tall Boy
* Mirror Image



Area includes balcony and private enclosed space (PES) where applicable and excludes among others, the RC - Reinforced Concrete Ledge and A/C - Air Conditioner Ledge. The plans are subject to change as may be required by relevant authorities. All floor plans and areas are subject to final survey. The balcony shall not be enclosed unless with the approved balcony screen, more particularly illustrated under the header "Approved Balcony Screen". Please refer to the letter containing the Particulars, Documents and Information relating to the development and the unit, for the floor plan relating to the unit you intend to purchase. The Sale and Purchase Agreement contains the entire agreement between the developer and the purchaser and supersedes and cancels in all respects all previous representations, warranties, promises, inducements or statements of intention, whether written or oral made by the developer and/or the developer's agent which are not embodied in the Sale and Purchase Agreement.



3-Bedroom + Study

Type C3S

84 sq m / 904 sq ft

BLK 6 : #02-16 to #11-16
BLK 8 : #02-21* to #11-21*

Type C3S (P)

84 sq m / 904 sq ft

BLK 6 : #01-16
BLK 8 : #01-21*

3-Bedroom Premium + Study

Type C4PS

97 sq m / 1044 sq ft

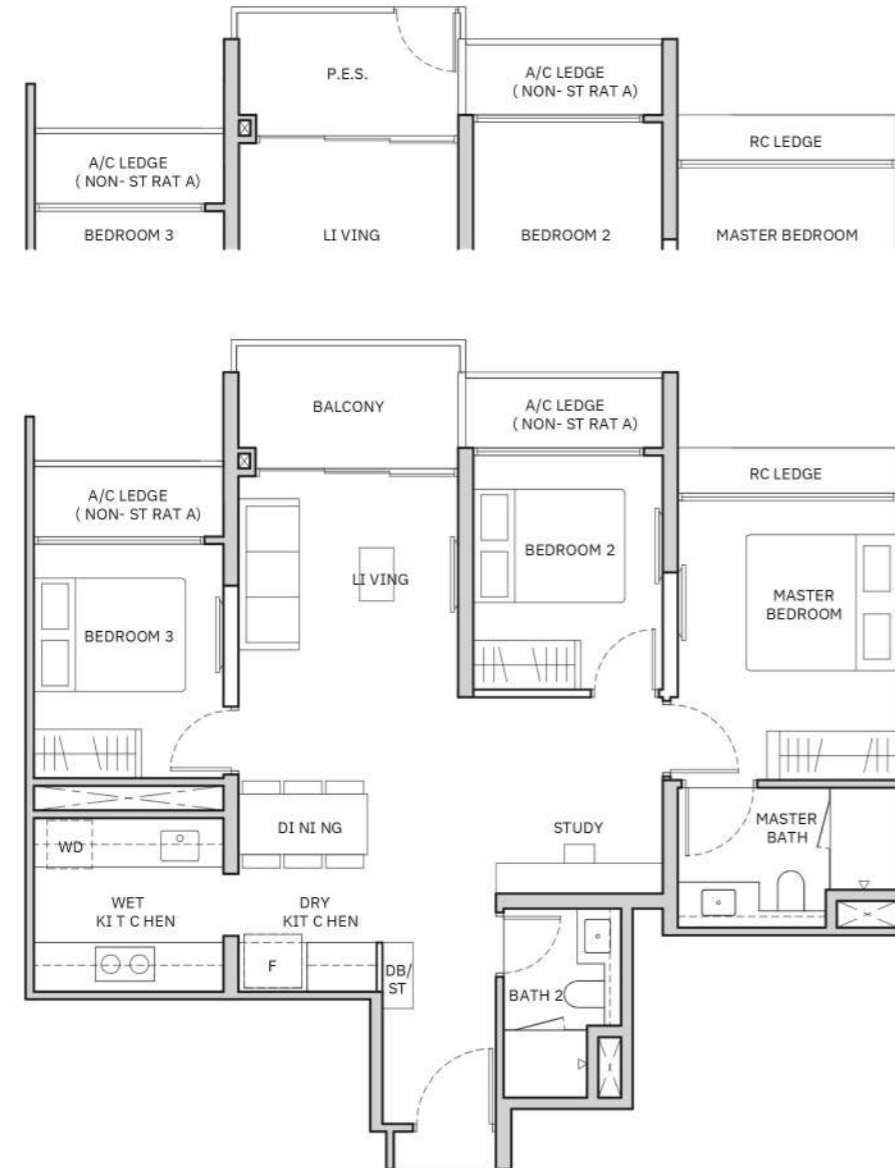
BLK 10 : #02-26 to #11-26

Type C4PS (P)

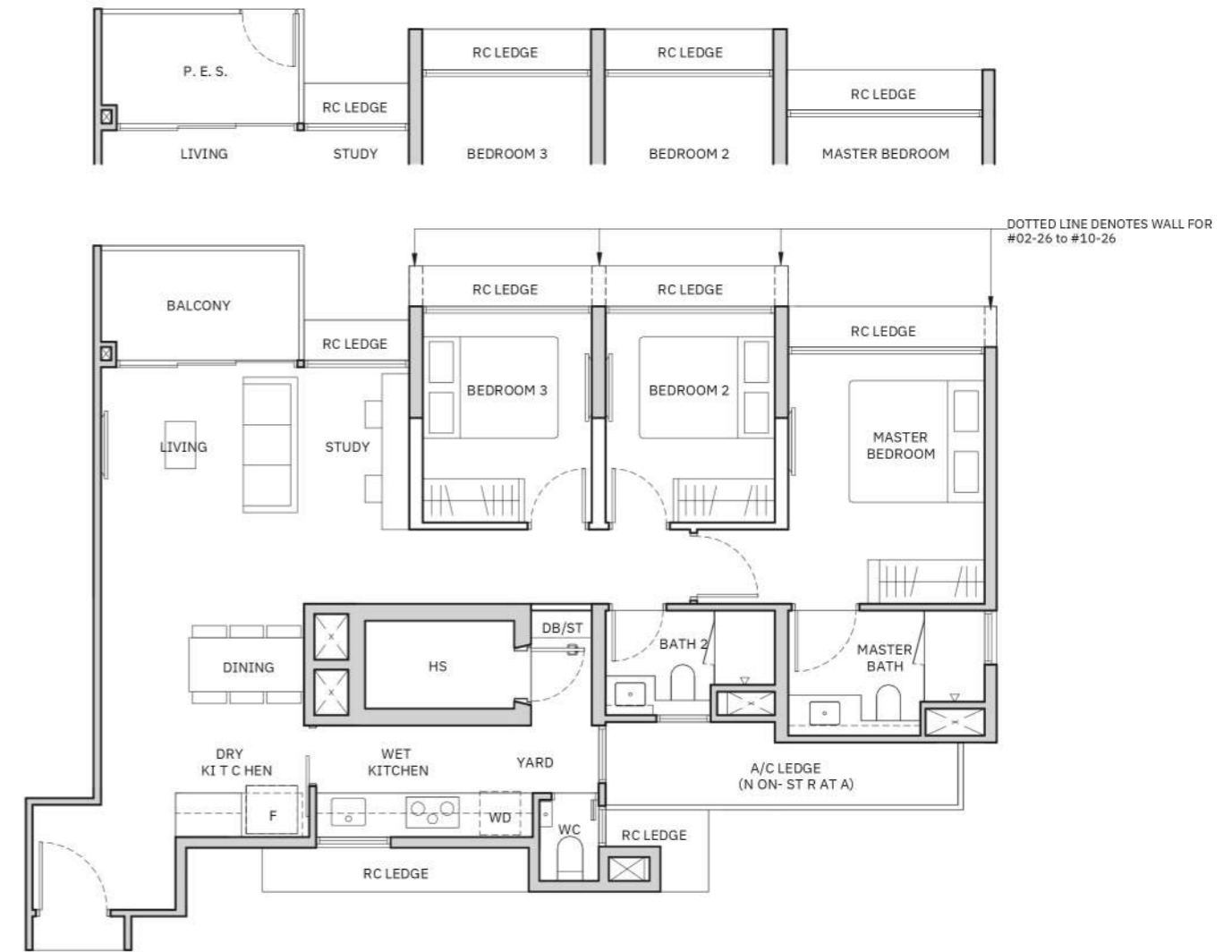
97 sq m / 1044 sq ft

BLK 10 : #01-26

Type C3S (P)



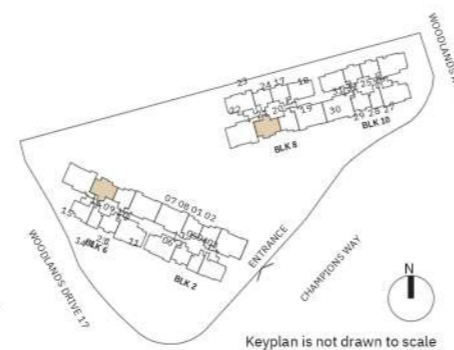
Type C4PS (P)



Wall not allowed to be hacked or altered
P.E.S. - Private Enclosed Space
WC - Water Closet
DB/ST - Distribution Board/Storage
F - Fridge
WD - Washer Cum Dryer
HS - Household Shelter
RC - Reinforced Concrete
A/C - Air-Conditioner

0 0.5 1 2 3 5M

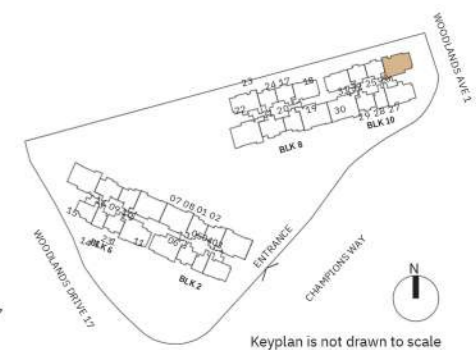
Area includes balcony and private enclosed space (PES) where applicable and excludes among others, the RC - Reinforced Concrete Ledge and A/C - Air Conditioner Ledge. The plans are subject to change as may be required by relevant authorities. All floor plans and areas are subject to final survey. The balcony shall not be enclosed unless with the approved balcony screen, more particularly illustrated under the header "Approved Balcony Screen". Please refer to the letter containing the Particulars, Documents and Information relating to the development and the unit, for the floor plan relating to the unit you intend to purchase. The Sale and Purchase Agreement contains the entire agreement between the developer and the purchaser and supersedes and cancels in all respects all previous representations, warranties, promises, inducements or statements of intention, whether written or oral made by the developer and/or the developer's agent which are not embodied in the Sale and Purchase Agreement.



Wall not allowed to be hacked or altered
P.E.S. - Private Enclosed Space
WC - Water Closet
DB/ST - Distribution Board/Storage
F - Fridge
WD - Washer Cum Dryer
HS - Household Shelter
RC - Reinforced Concrete
A/C - Air-Conditioner

0 0.5 1 2 3 5M

Area includes balcony and private enclosed space (PES) where applicable and excludes among others, the RC - Reinforced Concrete Ledge and A/C - Air Conditioner Ledge. The plans are subject to change as may be required by relevant authorities. All floor plans and areas are subject to final survey. The balcony shall not be enclosed unless with the approved balcony screen, more particularly illustrated under the header "Approved Balcony Screen". Please refer to the letter containing the Particulars, Documents and Information relating to the development and the unit, for the floor plan relating to the unit you intend to purchase. The Sale and Purchase Agreement contains the entire agreement between the developer and the purchaser and supersedes and cancels in all respects all previous representations, warranties, promises, inducements or statements of intention, whether written or oral made by the developer and/or the developer's agent which are not embodied in the Sale and Purchase Agreement.



3-Bedroom Premium + Study

Type C5PS
97 sq m / 1044 sq ft

BLK 8 : #02-23 to
BLK 10 #11-23 #02-
: 27 to #11-27

Type C5PS (P)
97 sq m / 1044 sq ft

BLK 8 : #01-
BLK 10 23
: #01-
27

4-Bedroom Deluxe + Study

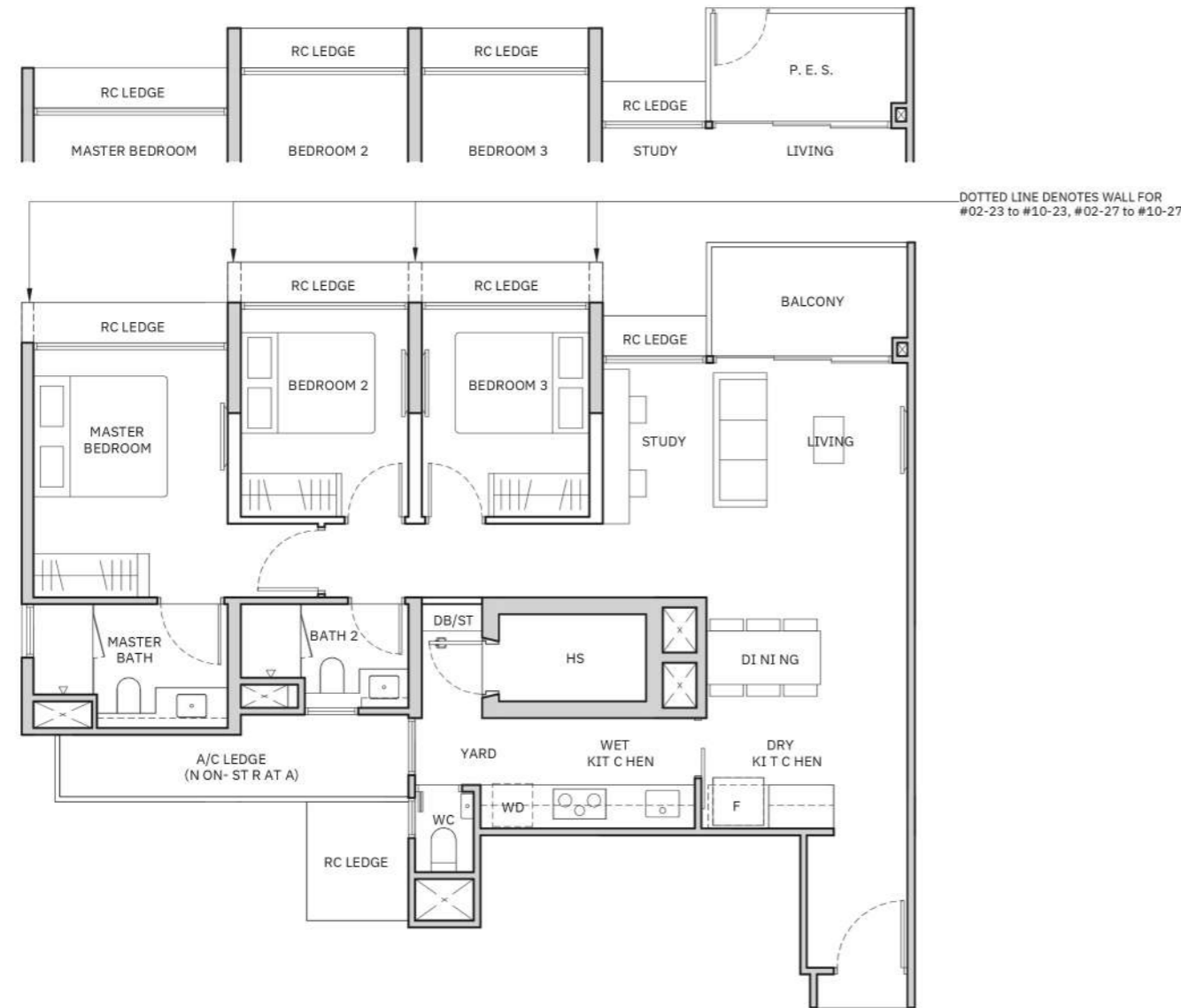
Type D1S
109 sq m / 1173 sq ft

BLK 2 : #02-06* to #11-06*
BLK 6 : #02-11 to #11-11

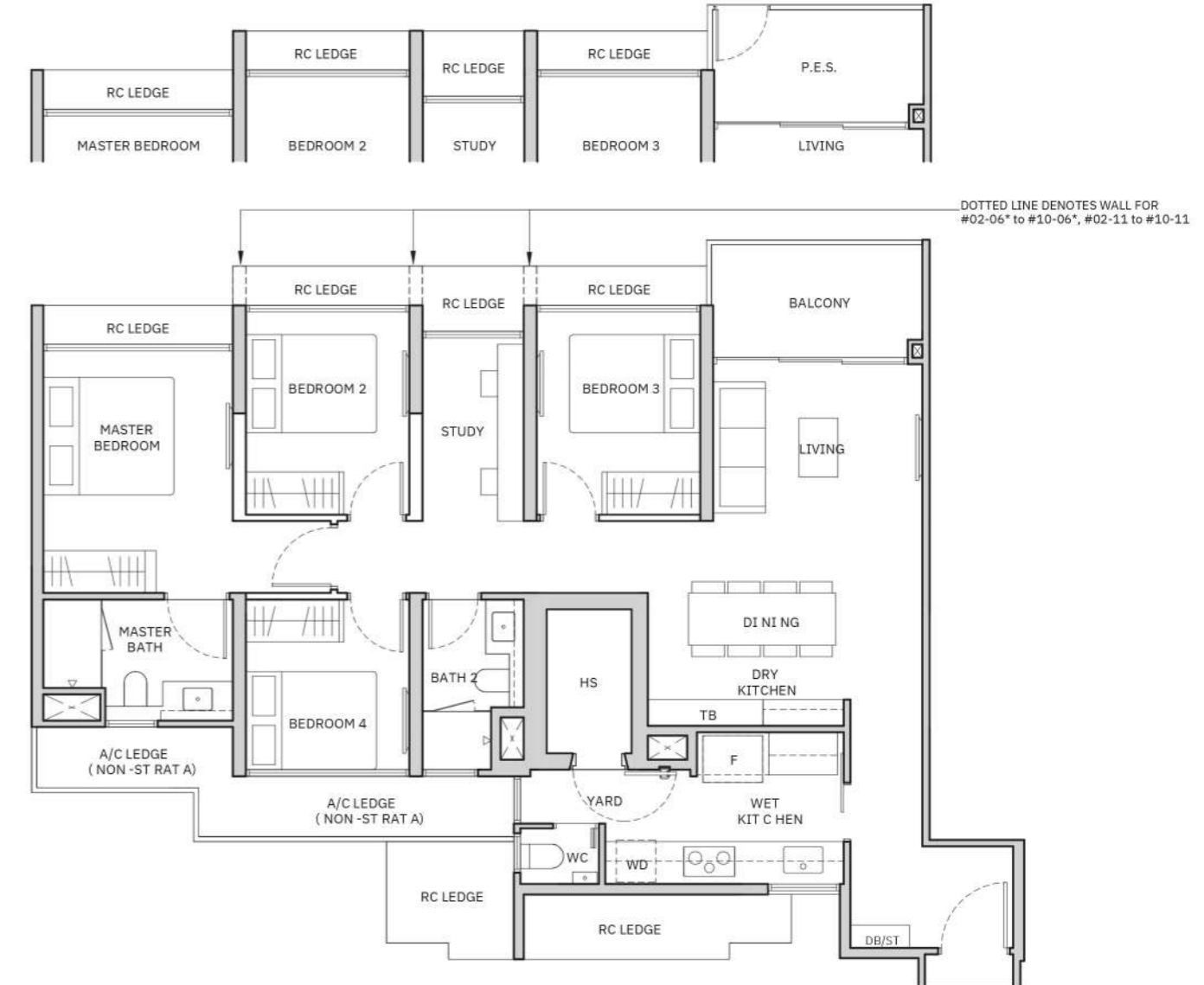
Type D1S (P)
109 sq m / 1173 sq ft

BLK 2 : #01-06*
BLK 6 : #01-11

Type C5PS (P)



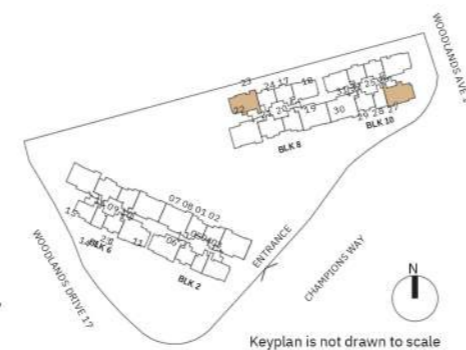
Type D1S (P)



Wall not allowed to be hacked or altered
TB Tall Boy
* Mirror Image
P.E.S. - Private Enclosed Space
WC - Water Closet
DB/ST - Distribution Board/Storage
F - Fridge
WD - Washer Cum Dryer
HS - Household Shelter
RC - Reinforced Concrete
A/C - Air-Conditioner



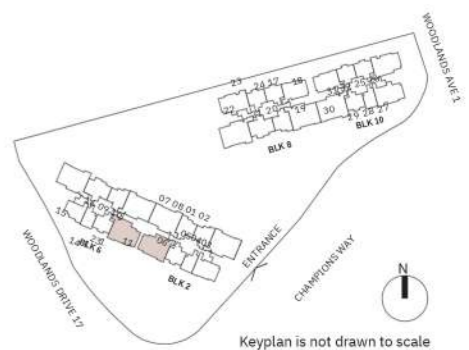
Area includes balcony and private enclosed space (PES) where applicable and excludes among others, the RC - Reinforced Concrete Ledge and A/C - Air Conditioner Ledge. The plans are subject to change as may be required by relevant authorities. All floor plans and areas are subject to final survey. The balcony shall not be enclosed unless with the approved balcony screen, more particularly illustrated under the header "Approved Balcony Screen". Please refer to the letter containing the Particulars, Documents and Information relating to the development and the unit, for the floor plan relating to the unit you intend to purchase. The Sale and Purchase Agreement contains the entire agreement between the developer and the purchaser and supersedes and cancels in all respects all previous representations, warranties, promises, inducements or statements of intention, whether written or oral made by the developer and/or the developer's agent which are not embodied in the Sale and Purchase Agreement.



Wall not allowed to be hacked or altered
TB Tall Boy
* Mirror Image
P.E.S. - Private Enclosed Space
WC - Water Closet
DB/ST - Distribution Board/Storage
F - Fridge
WD - Washer Cum Dryer
HS - Household Shelter
RC - Reinforced Concrete
A/C - Air-Conditioner



Area includes balcony and private enclosed space (PES) where applicable and excludes among others, the RC - Reinforced Concrete Ledge and A/C - Air Conditioner Ledge. The plans are subject to change as may be required by relevant authorities. All floor plans and areas are subject to final survey. The balcony shall not be enclosed unless with the approved balcony screen, more particularly illustrated under the header "Approved Balcony Screen". Please refer to the letter containing the Particulars, Documents and Information relating to the development and the unit, for the floor plan relating to the unit you intend to purchase. The Sale and Purchase Agreement contains the entire agreement between the developer and the purchaser and supersedes and cancels in all respects all previous representations, warranties, promises, inducements or statements of intention, whether written or oral made by the developer and/or the developer's agent which are not embodied in the Sale and Purchase Agreement.



4-Bedroom Premium + Study

Type D2PS
122 sq m / 1313 sq ft

BLK 2 : #02-02 to #11-02, #02-07* to #11-07*
BLK 6 : #02-10 to #11-10
BLK 8 : #02-19* to #11-19*
BLK 10 : #02-30 to #11-30
:

Type D2PS (P)
122 sq m / 1313 sq ft

BLK 2 : #01-07*
BLK 6 : #01-10
BLK 8 : #01-19*
BLK 10 : #01-30
:

4-Bedroom Premium + Study

Type D3PS
124 sq m / 1335 sq ft

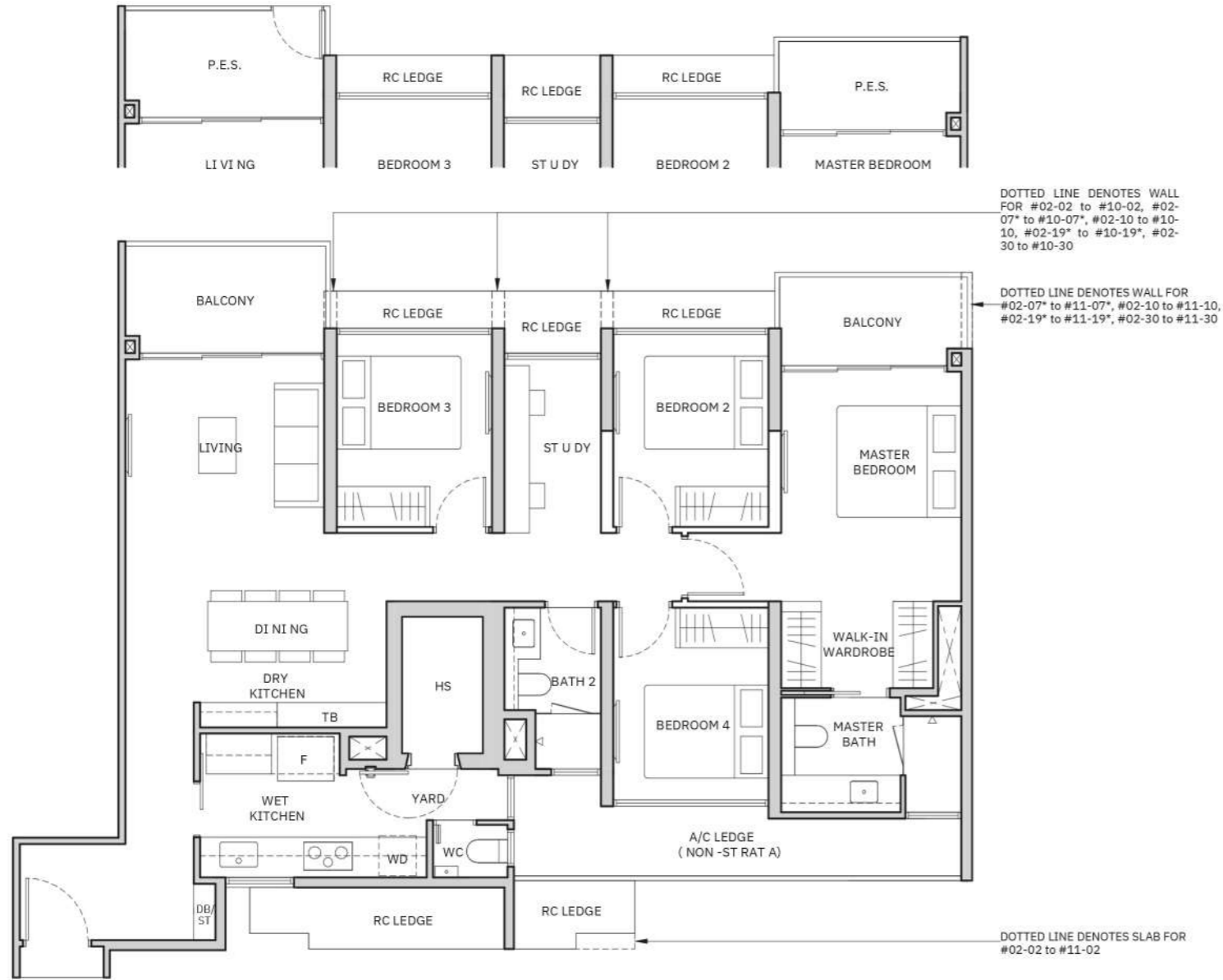
BLK 6 : #02-15* to #11-15*
BLK 8 : #02-22 to #11-22

Type D3PS (P)
124 sq m / 1335 sq ft

BLK 6 : #01-15*
BLK 8 : #01-22

Type-D2PS(P)

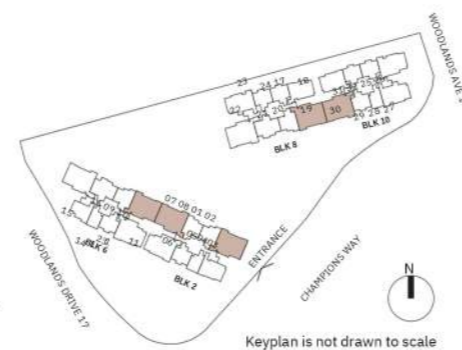
Type-D3PS(P)



Wall not allowed to be hacked or altered
P.E.S. - Private Enclosed Space
WC - Water Closet
DB/ST - Distribution Board/Storage
F - Fridge
WD - Washer Cum Dryer
HS - Household Shelter
RC - Reinforced Concrete
A/C - Air-Conditioner
TB - Tall Boy
* - Mirror Image



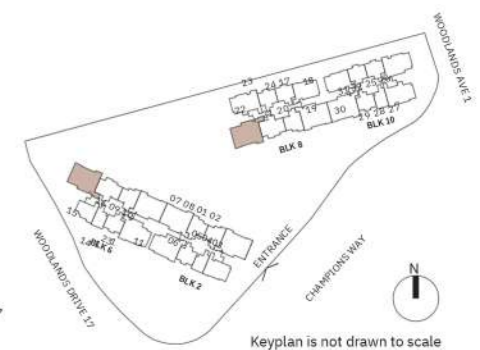
Area includes balcony and private enclosed space (PES) where applicable and excludes among others, the RC - Reinforced Concrete Ledge and A/C - Air Conditioner Ledge. The plans are subject to change as may be required by relevant authorities. All floor plans and areas are subject to final survey. The balcony shall not be enclosed unless with the approved balcony screen, more particularly illustrated under the header "Approved Balcony Screen". Please refer to the letter containing the Particulars, Documents and Information relating to the development and the unit, for the floor plan relating to the unit you intend to purchase. The Sale and Purchase Agreement contains the entire agreement between the developer and the purchaser and supersedes and cancels in all respects all previous representations, warranties, promises, inducements or statements of intention, whether written or oral made by the developer and/or the developer's agent which are not embodied in the Sale and Purchase Agreement.



Wall not allowed to be hacked or altered
P.E.S. - Private Enclosed Space
WC - Water Closet
DB/ST - Distribution Board/Storage
F - Fridge
WD - Washer Cum Dryer
HS - Household Shelter
RC - Reinforced Concrete
A/C - Air-Conditioner
TB - Tall Boy
* - Mirror Image

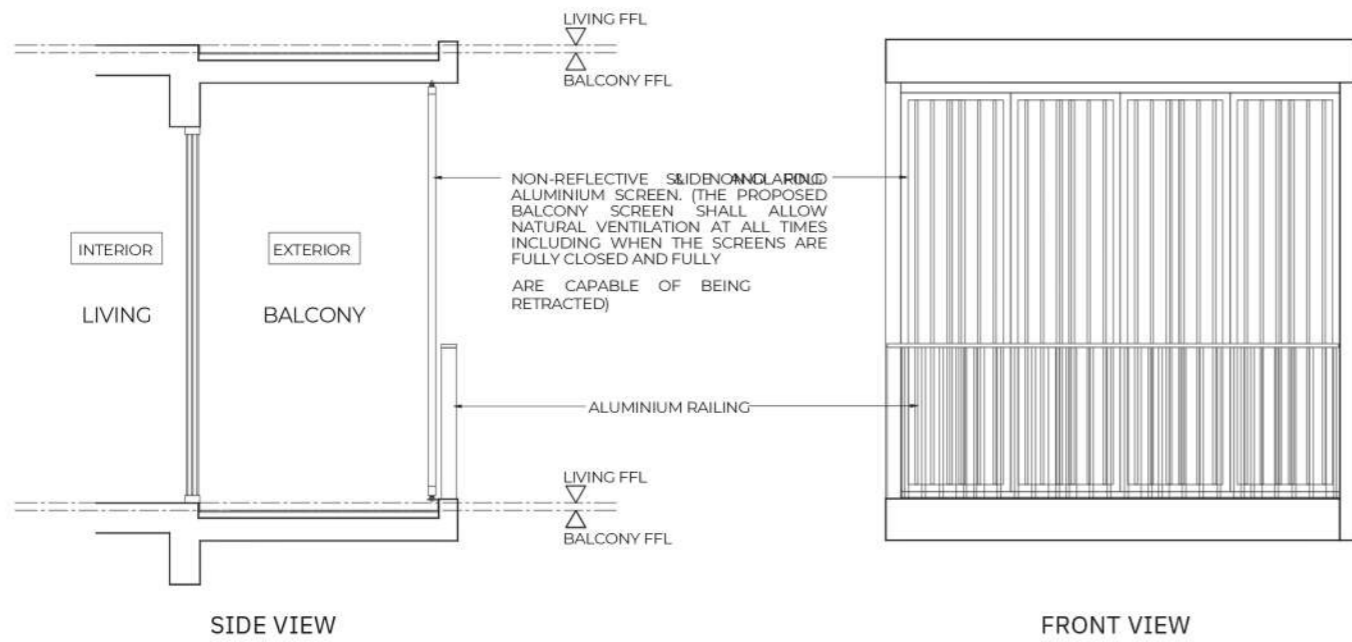
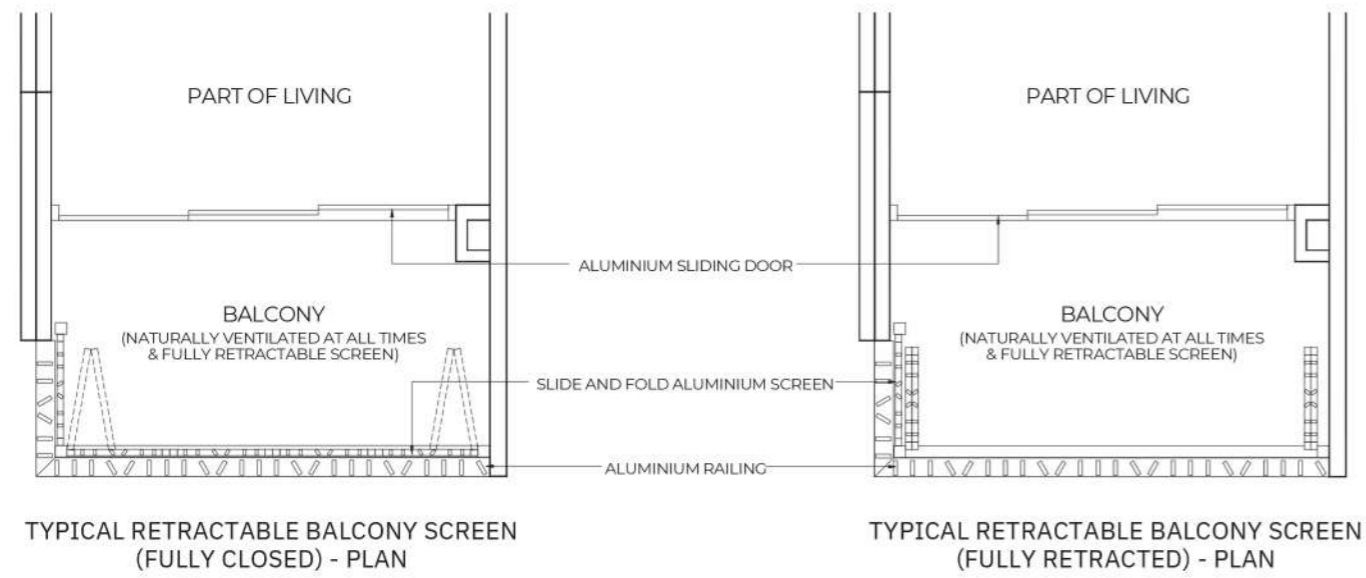


Area includes balcony and private enclosed space (PES) where applicable and excludes among others, the RC - Reinforced Concrete Ledge and A/C - Air Conditioner Ledge. The plans are subject to change as may be required by relevant authorities. All floor plans and areas are subject to final survey. The balcony shall not be enclosed unless with the approved balcony screen, more particularly illustrated under the header "Approved Balcony Screen". Please refer to the letter containing the Particulars, Documents and Information relating to the development and the unit, for the floor plan relating to the unit you intend to purchase. The Sale and Purchase Agreement contains the entire agreement between the developer and the purchaser and supersedes and cancels in all respects all previous representations, warranties, promises, inducements or statements of intention, whether written or oral made by the developer and/or the developer's agent which are not embodied in the Sale and Purchase Agreement.



Approved Balcony Screen

Typical Units



Singapore's Trusted Property Pioneer Since 1963

City Developments Limited (CDL) is a leading global real estate company with a network spanning 163 locations in 29 countries and regions. Listed on the Singapore Exchange, the Group is one of the largest companies by market capitalisation. Its income-stable and geographically diverse portfolio comprises residences, offices, hotels, serviced apartments, student accommodation, retail malls and integrated developments.

With a proven track record of over 60 years in real estate development, investment and management, the Group has developed over 50,000 homes and owns around 23 million square feet of gross floor area in residential for lease, commercial and hospitality assets globally.



Note:
The balcony shall not be enclosed unless with the approved balcony screen as shown above.
The cost of screen and installation shall be borne by the Purchaser.
Where required to facilitate installation, the Architect reserves the right to determine appropriate details not limited to fixing details and colour tones.